

# Regional Measure 3

## Citizens Advisory Committee Agenda Item 12



**SAN FRANCISCO COUNTY TRANSPORTATION AUTHORITY**

**February 14, 2017**

# Regional Measure 3 Update



## REGIONAL MEASURE 3 UPDATE

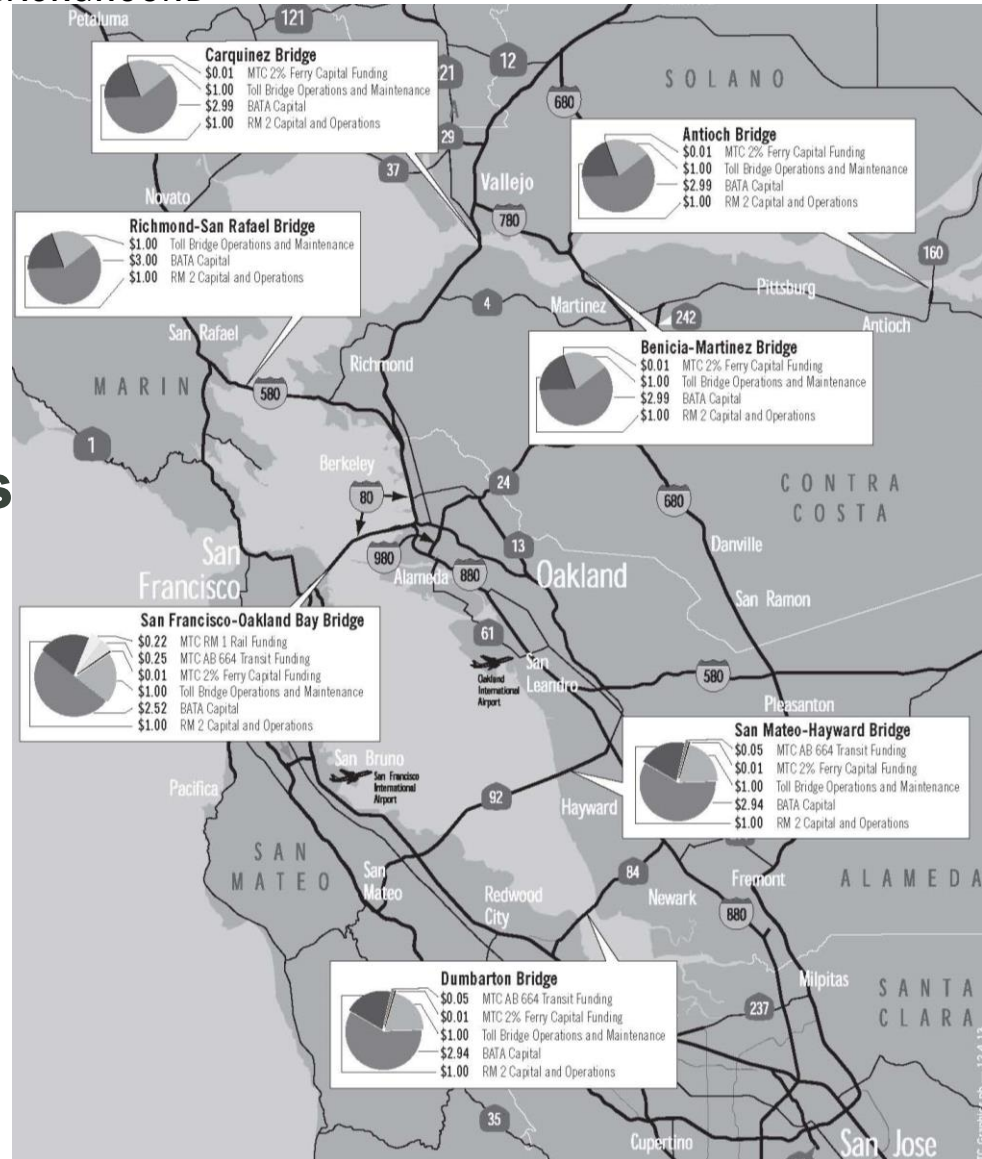
- ▶ **Bridge Tolls Background and History**
- ▶ **Regional Measure 3 Process**
- ▶ **MTC Draft Principles**
- ▶ **San Francisco Draft Priorities**
  - ▶ **Seeking Board input on principles**
- ▶ **Next Steps**
  - ▶ **Will seek Board action in March**

# Bay Area State-Owned Bridge Tolls



## REGIONAL MEASURE 3 UPDATE > BRIDGE TOLLS BACKGROUND

- ▶ **The Bay Area Toll Authority (BATA) administers the revenue from the Bay Area's 7 state-owned bridges**
- ▶ **BATA can raise bridge tolls for bridge seismic and repair work, but for other purposes requires state legislative authority**



# Bay Area State-Owned Bridge Tolls



REGIONAL MEASURE 3 UPDATE > BRIDGE TOLLS BACKGROUND

## ► Current bridge tolls comprised of several programs

Rate Increases	Toll
Regional Measure 1 (1988)	\$1
Seismic Surcharge (1998)	\$1
Regional Measure 2 (2004)	\$1
Seismic Surcharge (2007)	\$1
Enterprise Increase (2010)	\$1
<b>Total Auto Toll (2017)</b>	<b>\$5</b>

- Multi-axle vehicles pay an axle-based toll
- San Francisco-Oakland Bay Bridge toll varies weekdays: \$6 peak/\$4 off-peak, \$5 weekends



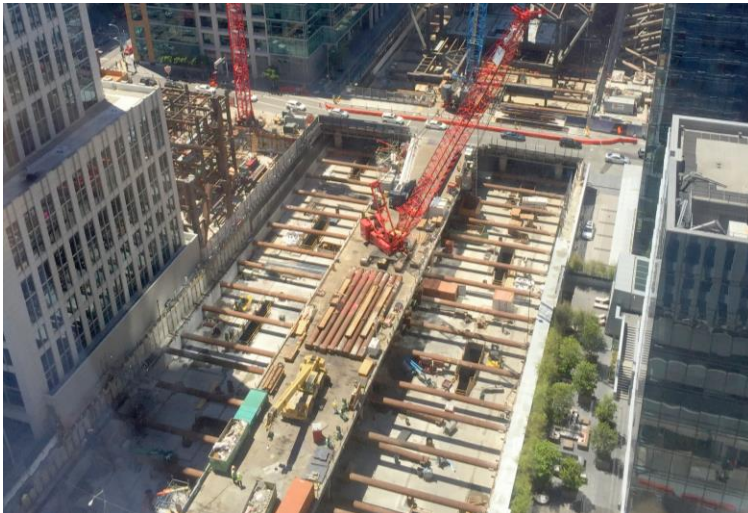
# Regional Measure 2



REGIONAL MEASURE 3 UPDATE > BRIDGE TOLLS BACKGROUND > RM2

## The Regional Traffic Relief Plan

- ▶ Voted into place on March 2, 2004 by voters of 7 counties: Alameda, Contra Costa, Marin, San Francisco, San Mateo, Santa Clara, Solano Counties
- ▶ Required 50% +1 vote across all 7 counties; received 57%
- ▶ \$1 bridge toll generates approximately \$125 million a year
  - ▶ \$1.5 billion program for capital improvement projects
  - ▶ \$1.6 billion transit operating program (capped at 38% of total revenues, or roughly \$45 million annually)



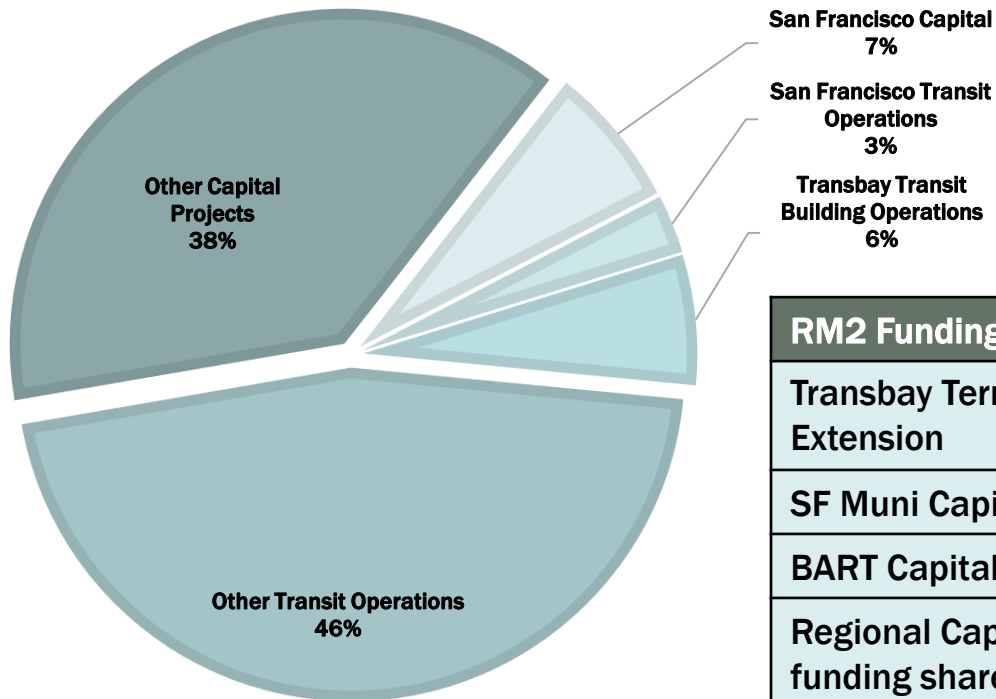


# Regional Measure 2: Funding Benefitting San Francisco

REGIONAL MEASURE 3 UPDATE > BRIDGE TOLLS BACKGROUND > RM2 > FUNDING



## TOTAL RM2 FUNDING



RM2 Funding to San Francisco	Amount
Transbay Terminal/Downtown Caltrain Extension	\$150 million
SF Muni Capital Projects	\$43 million
BART Capital Projects, SF share	\$19 million
Regional Capital Investment Programs funding share to San Francisco	\$18 million
MUNI operations funding (cumulative, 2005-2040)	\$95 million
Transbay Transit Building operations (cumulative, 2005-2040)	\$210 million
<b>Total</b>	<b>\$535 million</b>

# Regional Measure 2: Funding Benefitting San Francisco

REGIONAL MEASURE 3 UPDATE > BRIDGE TOLLS BACKGROUND > RM2 > FUNDING



## Capital Projects in San Francisco

SFMTA	BART/SF MUNI Direct Connection at Embarcadero & Civic Center Stations	\$3,000,000
SFMTA	SF MUNI Metro 3rd Street LRT Extension	\$30,000,000
SFMTA	MUNI Waterfront Historic Streetcar Expansion	\$10,000,000
TJPA	Transbay Terminal/Downtown Caltrain Extension	\$150,000,000

## BART Projects Benefitting San Francisco

BART	BART Tube Seismic Retrofit	\$33,801,000
BART	Transit Capital Rehabilitation	\$24,000,000

## Regional Program Funding

SFMTA	Safe Routes to Transit (total program: \$22,500,000)	\$4,899,301
BART	Safe Routes to Transit (total program: \$22,500,000)	\$781,000
SFMTA	Real-Time Transit Information (total program: \$20,000,000)	\$9,275,358
BART	Real-Time Transit Information (total program: \$20,000,000)	\$2,569,000
BART	TransLink (total program: \$22,000,000)	\$9,680,000

## Cumulative Transit Operating Funds to San Francisco (2005-2040)

SFMTA	Owl Bus Service on BART Corridor**	\$7,148,924
SFMTA	MUNI 3rd street	\$87,500,000
TJPA	Transbay Terminal Building Operations and Maintenance	\$210,000,000

\*\*assumes a constant percentage of program funding for SFMTA

# Regional Measure 3

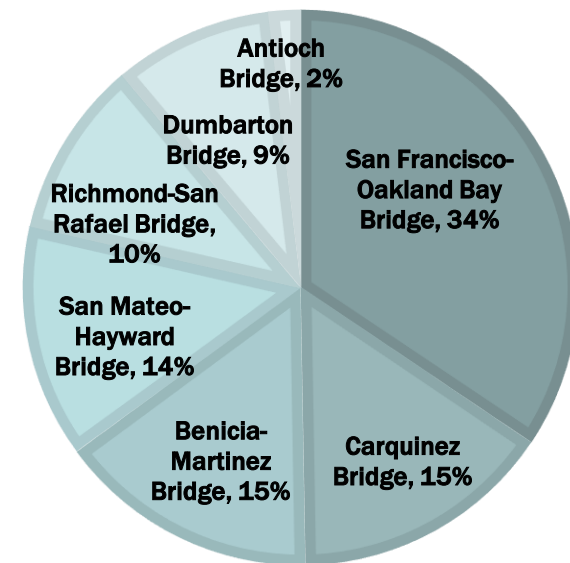


REGIONAL MEASURE 3 UPDATE > RM3

- ▶ **Top priority from Plan Bay Area**
- ▶ **Needs a clear nexus with the bridge corridors**
- ▶ **Plan to bring to voters in all 9 Bay Area counties**

Bridge	AADT (2015)	% of total bridges' traffic
San Francisco-Oakland Bay Bridge	260,000	34%
Carquinez Bridge	116,000	15%
Benicia-Martinez Bridge	115,000	15%
San Mateo-Hayward Bridge	103,000	14%
Richmond-San Rafael Bridge	78,000	10%
Dumbarton Bridge	70,000	9%
Antioch Bridge	14,100	2%

**BAY AREA BRIDGE TRAFFIC**





# Regional Measure 3



REGIONAL MEASURE 3 UPDATE > RM3

- ▶ **What will RM3 look like?**
- ▶ **What will be the process of developing RM3?**
  - ▶ **State level with Bay Area delegation**
  - ▶ **MTC-led technical process working with CMAs, transit operators, other stakeholders**

TOLL SURCHARGE AMOUNT	ANNUAL REVENUE	CAPITAL FUNDING AVAILABLE (25-YEAR BOND)
\$1	\$127 million	\$1.7 billion
\$2	\$254 million	\$3.3 billion
\$3	\$381 million	\$5.0 billion

Share to Operations (\$3 toll option)	Annual Operating Funding	Total Capital Budget
0%	-	\$5.0 billion
5%	\$19 million	\$4.7 billion
10%	\$37 million	\$4.5 billion
15%	\$56 million	\$4.2 billion
20%	\$75 million	\$4.0 billion

# Regional Measure 3: MTC's Draft Principles

REGIONAL MEASURE 3 UPDATE > RM3



## MTC DRAFT RM3 PRINCIPLES

<b>Bridge Nexus</b>	<b>Ensure all projects benefit toll payers in the vicinity of the San Francisco Bay Area's seven state-owned toll bridges</b>
<b>Regional Prosperity</b>	<b>Invest in projects that will sustain the region's strong economy by enhancing travel options and improving mobility in bridge corridors</b>
<b>Sustainability</b>	<b>Ensure all projects are consistent with Plan Bay Area 2040's focused growth and greenhouse gas reduction strategy</b>
<b>State of Good Repair</b>	<b>Invest in projects that help restore bridges and transportation infrastructure in the bridge corridors</b>
<b>Demand Management</b>	<b>Utilize technology and pricing to optimize roadway capacity</b>
<b>Freight</b>	<b>Improve the mobility, safety and environmental impact of freight</b>
<b>Resiliency</b>	<b>Invest in resilient bridges and approaches, including addressing sea level rise</b>

# Regional Measure 3: Recommendations for MTC's Draft Principles



REGIONAL MEASURE 3 UPDATE > RM3

- ▶ **Support MTC's Draft Principles**
- ▶ ***Ask to consider adding:***
  - ▶ **Equity**
  - ▶ **Multimodal**
- ▶ ***Additional considerations***
  - ▶ **Support operating funds (capped, with performance standards similar to RM2)**
  - ▶ **Support seeking a \$2-3 toll**

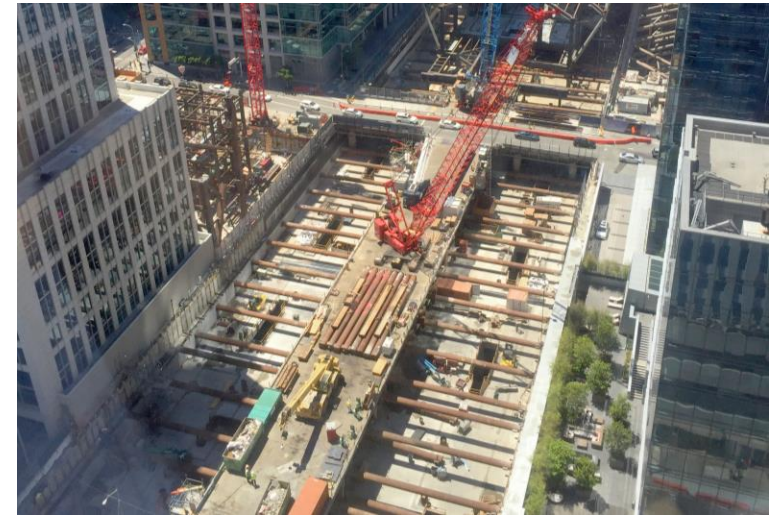


# Regional Measure 3: Proposed San Francisco Policy Framework

REGIONAL MEASURE 3 UPDATE > RM3



- ▶ ***Holistic approach to funding***
- ▶ **Core Capacity projects**
- ▶ **Equity**
- ▶ **Multimodal**
- ▶ **Active Congestion Management**



# Regional Measure 3: Potential Projects in San Francisco

REGIONAL MEASURE 3 UPDATE > RM3



- ▶ **SFCTA (TIMMA Mobility Management Program; Freeway Corridor Management Study)**
- ▶ **SFMTA (expansion vehicles and facilities; Geary BRT; Better Market Street; MUNI Station Enhancements)**
- ▶ **BART (expansion vehicles; Core Capacity project)**
- ▶ **TJPA (Downtown Extension; Transbay Transit Center)**
- ▶ **Caltrain (expansion vehicles, grade separations)**
- ▶ **WETA / Port of San Francisco (Mission Bay Ferry Landing)**
- ▶ **AC Transit (Transbay/Treasure Island service)**
- ▶ **Late Night Transportation Service (various operators)**
- ▶ **Core Capacity Transit Study – Long Term Options (2<sup>nd</sup> transbay tube)**



**SFMTA**  
Municipal Transportation Agency



San Francisco Bay Ferry



TRANSBAY JOINT POWERS AUTHORITY





# Regional Measure 3: Next Steps

REGIONAL MEASURE 3 UPDATE > RM3 > NEXT STEPS



- ▶ ***Continue to coordinate with San Francisco agencies and regional transit operators on San Francisco priorities***
- ▶ ***Seek input from Board and key stakeholders***
- ▶ ***Attend MTC stakeholder meetings***
- ▶ ***March Board – seek action on policy framework and initial project list for San Francisco***
- ▶ ***Work with Board/Mayor’s Office on state delegation engagement***



Thank you. Questions?

Michelle Beaulieu  
Senior Transportation Planner  
[Michelle.Beaulieu@sfcta.org](mailto:Michelle.Beaulieu@sfcta.org)



SAN FRANCISCO COUNTY TRANSPORTATION AUTHORITY