

Attachment 4.
Communities of Concern
as Identified by the Metropolitan Transportation Commission

The Metropolitan Transportation Commission’s (MTC’s) Lifeline Transportation Program (LTP) has two components. The first provides planning funds to complete Community Based Transportation Plans (CBTPs) in identified Communities of Concern (CoC). The second, the subject of this call, provides funds to complete projects that are included in, or derived from, CBTPs and other local planning efforts for low-income communities.

As part of the current update to the Regional Transportation Plan (RTP), also known as Plan Bay Area, the MTC has revised its definition of CoCs from the past RTPs. The revised definition identifies eight disadvantage factors as shown in Table 1, and defines CoCs as areas with four or more disadvantage factors using the updated Census data. In addition, areas with both low-income and minority concentration factors are considered to be CoCs even if they do not meet the four-factor threshold.

Table 1. Eight Disadvantage Factors Used by MTC to Identify CoCs

	% of Regional Population ¹	Community Concentration Threshold
1. Minority Residents	54%	70%
2. Low-Income Residents (<200% of poverty)	23%	30%
3. Residents who do not speak English well or at all	9%	20%
4. Households with no car	9%	10%
5. Seniors age 75+	6%	10%
6. Persons with a disability	18%	25%
7. Single-parent households	10%	15%
8. Cost-burdened renters	10%	15%

¹ Source: American Community Survey 2005-09 tract-level data except for population with a disability, which is from Census 2000

Table 2 below lists San Francisco’s CoCs based on the new evaluation criteria. San Francisco’s one new CoC (i.e. not defined as a CoC in prior LTP cycles) is shown in bold.

Table 2. San Francisco CoCs and CBTP Status¹

CoCs as of October 2011	CBTP Status (Study Area, Completion Date)
1. Downtown/Chinatown/North Beach/Treasure Island	Not yet initiated
2. Tenderloin/Civic Center	Tenderloin/Little Saigon, 2007
3. South of Market	Western SOMA, 2012
4. Western Addition/ Inner Richmond	Not yet initiated
5. Inner Mission	Not yet initiated
6. Bayview/Hunter’s Point	Bayview Hunters Point, 2010
7. Outer Mission/Crocker-Amazon/Ocean View	Mission/Geneva, 2007

¹ CoCs to be adopted in the Plan Bay Area, which is anticipated to be approved in June 2013.

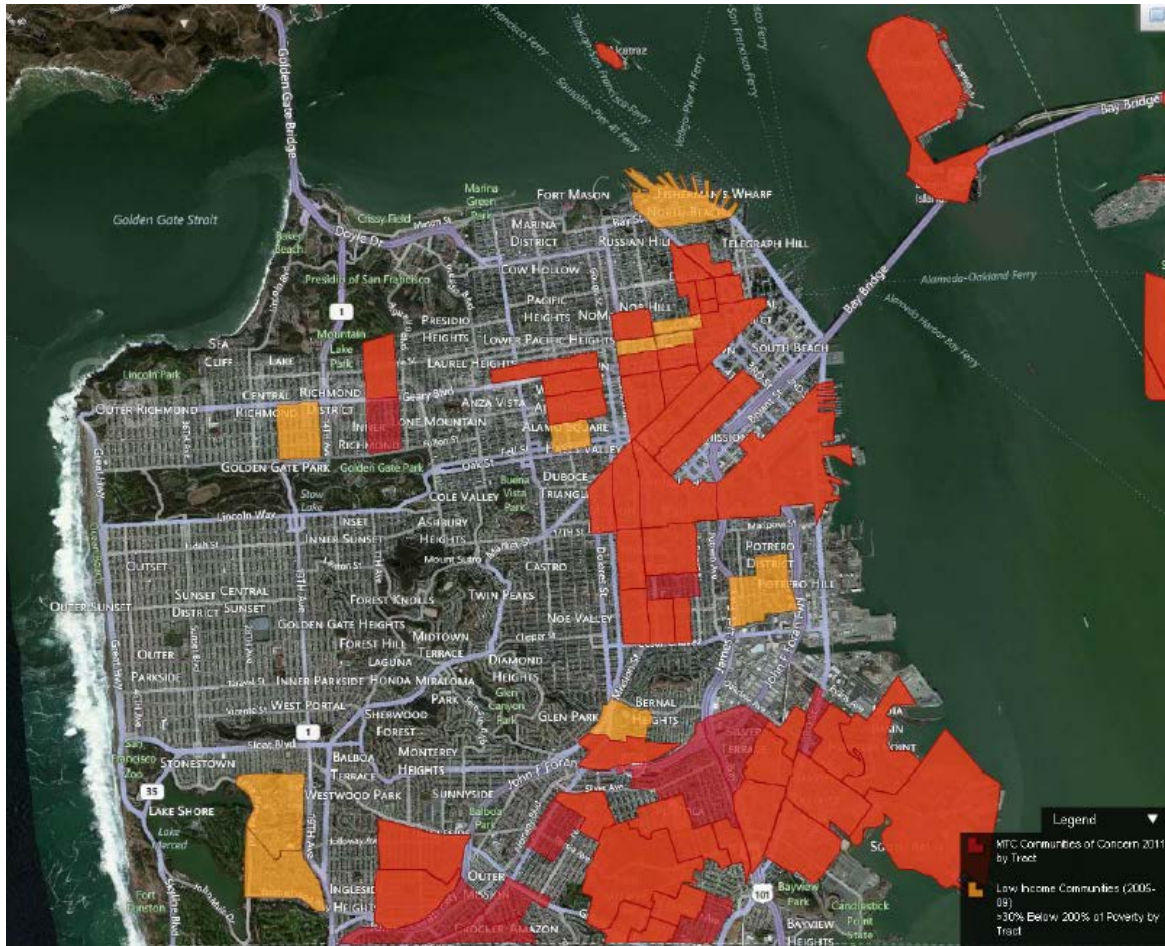
While most of the CBTP area names have remained the same, the definitions of the areas themselves (i.e. the borders of the plan areas) have in most cases changed. Figure 1 below shows the newly defined CoCs in red. The areas in orange represent additional low-income communities,

Attachment 4.
Communities of Concern
as Identified by the Metropolitan Transportation Commission

or areas with concentrations of low-income populations that do not meet the overall threshold for being classified as a CoC.

Because of the LTP's emphasis on serving low-income populations, officially defined CoCs and the other non-CoC low-income communities, shown in red and orange respectively, are considered areas of particular interest. Also, projects that apply findings emerging from CBTPs or other relevant planning efforts as specified in the LTP guidelines to these low-income areas will also be considered.

Figure 1. San Francisco CoC Map¹



¹ Source: MTC, February 1, 2012

For more information on CoCs:

- MTC staff memo and attachments on Plan Bay Area Equity Analysis Framework to the Planning Committee on October 7, 2011:
<http://apps.mtc.ca.gov/events/agendaView.akt?p=1752>
- Interactive map showing CoCs:
<http://bit.ly/SzgKXG> (under the revised definition only)
<http://geocommons.com/maps/129203> (under the original and revised definitions, as well as low-income areas outside of CoCs)